

PHÉNIX TBX - TGX

Self-supporting X sprayer



www.razol.fr

PHÉNIX TBX

Self-supporting X sprayer

The discs sprayer Phénix TBX meets all challenges: the unique design of its double beam chassis and the direct control of the working angle break all limits of stubble cultivation.

The command centering inside the cabin allows the user to smoothly adapt the tool to all working conditions. The use of a roller is highly recommended for false sowing. It is made for tractors with power from 120 to 180 cv depending on the machine.



Strong points

Hydraulic adjustment of the angle of the discs

Longitudinal folding at 2,50 m on the road

Hitch fixed ring or rotating ring

Hydraulic connection : 2 DA outputs

Wheels lifting by 1 DA cylinder

+ DEPTH CONTROL

Using wheels with a DA cylinder equipped with a position hydraulic cue, which is an essential safety tool for work and on the road.

+ PIVOTING

High thickness with inside retaining, rings and lubricators for an optimal contact and movement.

+ CHASSIS

Double steel beam 200 x 120 x 10 mm for good rigidity at work and an even weight distribution. Easy access and maintenance. The spire is reinforced and integrates hydraulic hoses.

+ FAIRED BOXES + SHROUDS

With internal stiffeners and adjustable reinforcement shrouds for perfectly even ground on the entire working width.

+ RAZOL «X» CONCEPT

Shifted front and rear discs with degressive assembly of the rear discs for perfect crossing and to avoid any chance of ridging.

+ BALANCE HYDRAULIC ADJUSTMENT

In option.

+ SAFETY

Homologated 25 km/h as standard.

+ HYDRAULIC TBX H ANGLE ADJUSTMENT

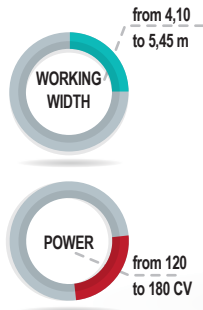
Synchronized of the 4 discs arrays by a single DA cylinder to perfectly suit the land, even during work. By increasing the angle value, a tensile stress is applied on the connecting rods and the inverter. The angle appears at the front to be visible from the tractor. The same cylinder is also used to set transport mode. Standard lighting.



+ REAR ARRAYS ADJUSTMENT

By adjusting a screw bar for very accurate working angle adjustment depending to the type of the land.





Standard equipments

- CHASSIS double steel beam 200 x 120 x 10 mm
- HITCH with fixed ring, adjustable in height 3 positions
- BALANCE ADJUSTMENT manual
- ARRAYS 150 x 100 x 8 mm with angle hydraulic adjustment 8 positions from 10° to 24° by 1 DA cylinder
- Manganese-silica SHAFT 40 mm, bearings with double row of tapered rollers, lubrication every 100 hours
- WHEELS 400/60-15,5 FL+
- TRUCK 1 DA cylinder with hydraulic slider (transport safety)
- SQUARE AXLE of 70 mm, 6 axes
- LONGITUDINAL FOLDING for transport by the arrays adjustment DA cylinder
- BRAKING, standard hydraulic coupled mechanical

TBX 40 - 200 mm/660-6 mm	44 discs	48 discs	52 discs	56 discs
Working width	4,30 m	4,70 m	5,10 m	5,50 m
Power	120 to 150 cv	130 to 160 cv	140 to 180 cv	160 to 200 cv
Number of bearings	8	12	12	12
Weight	4 445 kg	4 755 kg	4 905 kg	5 055 kg

TBX 40 - 230 mm/660-6 mm	36 discs	40 discs	44 discs	48 discs
Working width	4,10 m	4,55 m	5,00 m	5,45 m
Power	120 to 150 cv	130 to 160 cv	140 to 180 cv	160 to 200 cv
Number of bearings	8	8	12	12
Weight	4 205 kg	4 367 kg	4 688 kg	4 849 kg

Options available:

- Bearing protection shell
- Additional bearing
- Wheels 500/50-17 FL+
- Elongate hitch for tractor with twin wheels
- Rotating ring
- Balance hydraulic adjustment
- Deflector discs
- Side deflectors
- Circular coulter
- Hydraulic suspension
- Hectare counter

ROL 10

- CHASSIS steel beam 120 x 120 x 7 mm
- 2 ELEMENTS with hydraulic lifting
- HYDRAULIC FOLDING of the elements by 2 DA cylinders
- SOIL ADJUSTMENT by 1 DA cylinder equipped with a hydraulic valve
- DAMPER with adjustable tension spring
- HYDRAULIC CONNECTION 1 DA output

ROL 10 FLAT IRONS	Working width	3,35 m	3,80 m	4,25 m	4,75 m
Ø500 mm, 10 flats	Weight	700 kg	725 kg	755 kg	780 kg
ROL 10 TUBES	Working width	3,35 m	4,65 m	5,10 m	5,60 m
Ø550 mm, 10 tubes	Weight	690 kg	715 kg	740 kg	765 kg

PHÉNIX TGX

Self-supporting X sprayer

The discs sprayer Phénix TGX meets all challenges: the unique design of its double beam chassis and the direct control of the working angle break all limits of stubble cultivation.

The command centering inside the cabin allows the user to smoothly adapt the tool to all working conditions. The use of a roller is highly recommended for false sowing. It is made for tractors with power from 80 to 140 cv depending on the machine.



Strong points

Hydraulic adjustment of the angle of the discs

Longitudinal folding at 2,50 m on the road

Hitch fixed ring or rotating ring

Hydraulic connection : 2 DA outputs

Wheels lifting by 1 DA cylinder

+ DEPTH CONTROL

Using wheels with a DA cylinder equipped with a position hydraulic cue, which is an essential safety tool for work and on the road.

+ CHASSIS

Double steel beam 180 x 100 x 8 mm for good rigidity at work and an even weight distribution. Easy access and maintenance. The spire is reinforced and integrates hydraulic hoses.

+ BALANCE HYDRAULIC ADJUSTMENT

In option.

+ PIVOTING

High thickness with inside retaining, rings and lubricators for an optimal contact and movement.



+ FAIRED BOXES + SHROUDS

With internal stiffeners and adjustable reinforcement shrouds (starting from 32 discs) for perfectly even ground on the entire working width.

+ SAFETY

Homologated without braking for 40 km/h as standard.

+ RAZOL «X» CONCEPT

Shifted front and rear discs with degressive assembly of the rear discs for perfect crossing and to avoid any chance of ridging.

+ HYDRAULIC TGX H ANGLE ADJUSTMENT

Synchronized of the 4 discs arrays by a single DA cylinder to perfectly suit the land, even during work. By increasing the angle value, a tensile stress is applied on the connecting rods and the inverter. The angle appears at the front to be visible from the tractor. The same cylinder is also used to set transport mode.

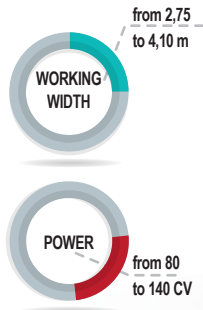
In reduction, the adjustment and the transport mode setting can also be MANUAL TGX M. Lighting is standard.



+ REAR ARRAYS ADJUSTMENT

By adjusting a screw bar for very accurate working angle adjustment depending to the type of the land.





- CHASSIS double steel beam 180 x 100 x 8 mm
- HITCH with fixed ring, adjustable in height 2 positions
- BALANCE ADJUSTMENT manual
- ARRAYS 150 x 100 x 8 mm with angle hydraulic adjustment 9 positions from 10° to 24° by 1 DA cylinder
- Manganese-silica SHAFT 40 mm, bearings with double row of tapered rollers, lubrication every 100 hours
- WHEELS 300/80-15,5 FL+
- TRUCK 1 DA cylinder with hydraulic slider for depth control (transport safety)
- SQUARE AXLE of 60 mm, 6 axes
- LONGITUDINAL FOLDING for transport by the arrays adjustment DA cylinder
- WITHOUT BRAKING, standard secondary attachment chain

TGX 40 - 200 mm/660-6 mm	28 discs	32 discs	36 discs	40 discs
Working width	2,75 m	3,15 m	3,55 m	3,90 m
Power	80 to 110 cv	90 to 120 cv	100 to 130 cv	110 to 140 cv
Number of bearings	8	8	8	8
Weight	3 175 kg	3 225 kg	3 475 kg	3 685 kg

TGX 40 - 230 mm/660-6 mm	24 discs	28 discs	32 discs	36 discs
Working width	2,75 m	3,20 m	3,65 m	4,10 m
Power	80 to 110 cv	90 to 120 cv	100 to 130 cv	110 to 140 cv
Number of bearings	8	8	8	8
Weight	3 070 kg	3 230 kg	3 390 kg	3 550 kg

Options available:

- Bearing protection shell
- Additional bearing
- Wheels 400/60-R15,5 FL+
- Rotating ring
- Hydraulic coupled mechanical braking
- Balance hydraulic adjustment
- Deflector discs
- Lateral deflector
- Circular coulter
- Hydraulic suspension
- Hectare counter

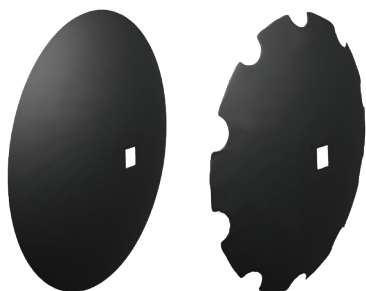
ROL 10

- CHASSIS steel beam 120 x 120 x 7 mm
- 2 ELEMENTS with hydraulic lifting
- HYDRAULIC FOLDING of the elements by 2 DA cylinders
- SOIL ADJUSTMENT by 1 DA cylinder equipped with a hydraulic valve
- DAMPER with adjustable tension spring
- HYDRAULIC CONNECTION 1 DA output

Braking mandatory with a roller

ROL 10 FLAT IRONS	Working width	3,35 m	3,80 m	4,25 m	4,75 m
Ø500 mm, 10 flats	Weight	700 kg	725 kg	755 kg	780 kg
ROL 10 TUBES	Working width	3,35 m	4,65 m	5,10 m	5,60 m
Ø550 mm, 10 tubes	Weight	690 kg	715 kg	740 kg	765 kg

DISCS WITH INSIDE SHARPENING



+ DISCS Ø660

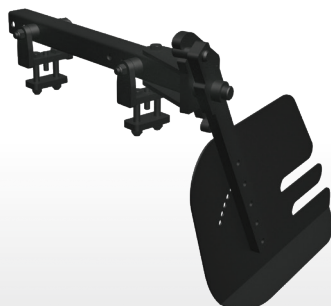
- Mounted on square shaft 40 mm
- Spacing between discs 230 mm
- Thickness available: 7 ou 8 mm

ACCESSORIES



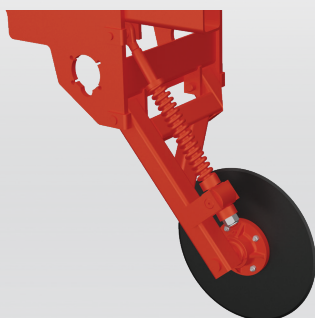
+ DEFLECTOR DISC Ø510

Fixed inside the first disc to avoid excessive earth projection outside the tool working width.



+ LATERAL DEFLECTOR

All directions adjustable, it prevents earth projection of the front array from getting out of the rear array working width.



+ CIRCULAR COULTER

Highly recommended for sloping, it keeps the tool straight and stable in difficult conditions.

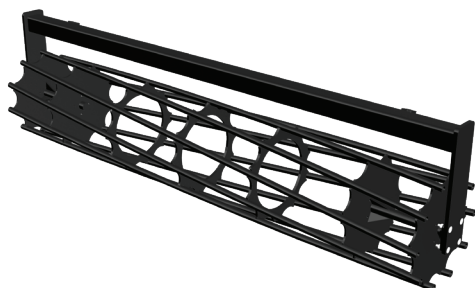


+ BALANCE HYDRAULIC ADJUSTMENT

Useful for continuous adjustment while working on very rough ground.

ROLLER ROL 10

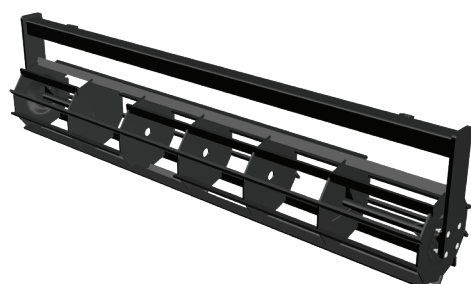
The PHÉNIX TBX can be equipped with a rear roller to crumble on the surface of the ground. The roller has hydraulic adjustment. However it also has a damping spring to deal with ground flatness defects.



+ TUBES

Ø550 mm, 10 tubes
Flanged ball bearing Ø30 mm

- Dry and hilly lands
- Clays and sands
- Good tamping
- Weight : 130 kg/m



+ FLAT IRONS

Ø500 mm, 10 flats
Flanged ball bearing Ø30 mm

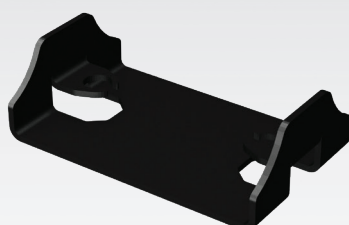
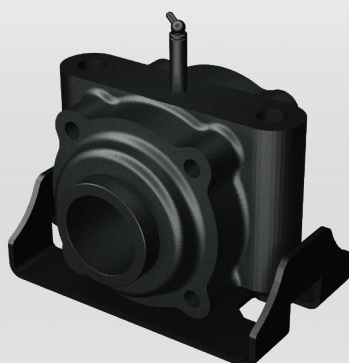
- Dry and hilly lands
- Clays and sands
- Aggressive flat irons
- Weight : 145 kg/m

BEARINGS

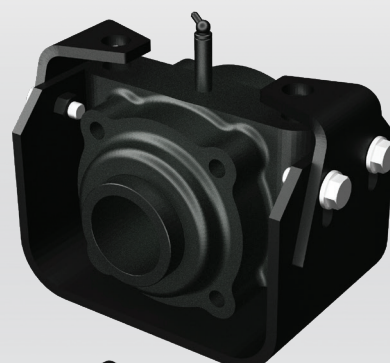
Square bearing 40 mm



Square bearing 40 mm
with standard protection



Square bearing 40 mm
with reinforced protection



- Cast iron lids and bearing housings
- Steel sheath
- Tapered roller bearings



Devices **with INDEPENDENT DISCS**

SKYRON fixed independent disc harrow
SKYRON folding independent disc harrow
SKYRON self-supporting independent disc harrow



Devices **with DISCS X**

ORBYS self-supporting X combining sprayer
ZÉNITH RGH self-supporting X combining sprayer
ZÉNITH RZH self-supporting X combining sprayer
ZÉNITH RJH self-supporting X combining sprayer
PHÉNIXTGX self-supporting X sprayer
PHÉNIXTBX self-supporting X sprayer



Devices **with DISCS V**

CWH - CWHR super heavy self-supporting V Cover Crop
SYNCHRONIC CIN self-supporting V Cover Crop
CLH - CVH heavy self-supporting V Cover Crop
CIH - CJH self-supporting V Cover Crop



Devices **with SUPPORTED DISCS**

VITICROP mounted X sprayer
VINIDISC mounted disc harrow
TXL mounted X sprayer
TRW heavy-duty mounted reversible sprayer
CCW - CCU mounted reversible sprayer



Devices **for ROLLING**

ROLLPACK self-supporting cast iron roller
TORO - RVH self-supporting cast iron roller
RVH EVO self-supporting steel smooth roller



Devices **with TINES**

KILIS - KILIS R combined cultivator with flexible tines
TÉOS - TÉOS R stubble cultivator with curved tines 3 rows



Devices **for LOOSENING**

ARASOL AVLE supported subsoiler
ARASOL AVS - AVR supported subsoiler
ARAPLOWACV supported decompactor
ARAPLOWACM - ACMH supported decompactor
ARAMULCHADM - ADMH supported decompactor
DVV supported subsoiler for vineyard and orchards



Devices **for SPRING**

BLI - BMI - BSI folding and fixed mounted cultivator