

# CWH - CWH R

Super heavy self-supporting V Cover Crop



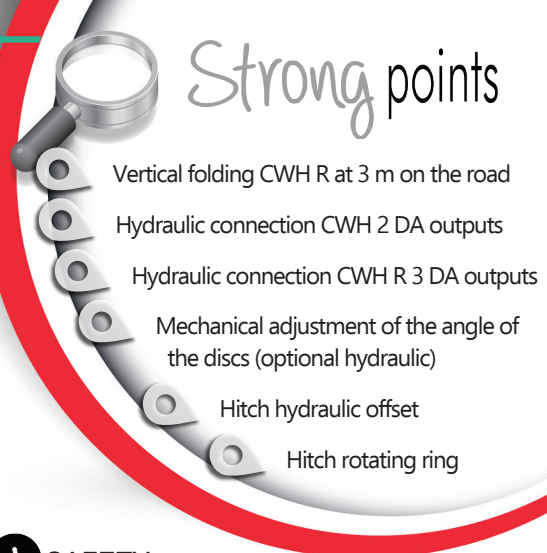
[www.razol.fr](http://www.razol.fr)



# CWH - CWH R

Super heavy self-supporting V Cover Crop

Designed for high power tractors from 120 to 320 CV with working width from 2,35 to 5,80 m, the super heavy self-supporting V Cover Crop is especially effective for stubble cultivation and residue burying. It can also be used to clear forest plots.



## + FOLDABLE BEAM

200 x 120 x 8 mm for discs Ø660 mm and Ø730 mm.

200 x 120 x 10 mm for discs Ø810 mm.

## + SAFETY

The tool is homologated for 25 km/h thanks to a mechanical coupling hydraulic braking.

The LED signalling is standard.

## + FOLDING

By 4 cylinders DA equipped with balancing valve for continuous holding in working or transport mode.



## + HITCH

Standard rotating ring.  
Boom hydraulic offset by a DA cylinder.

## + CHASSIS

Steel double beam 200 x 120 x 10 mm.

## + WIDE WHEELS

500/50-17 to guarantee stability on the road and during working depth control.



## + TRANSPORT AND LOCKING

Thanks to arrays holder beam folding by 4 DA cylinders, the transport width is less than 3 m.  
A manual lock with spindle ensure optimum safety on the road.

## + DEPTH CONTROL

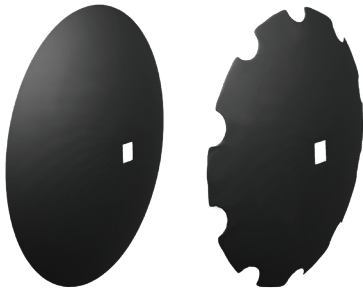
The working depth is run by the position of the transport wheels.

On one of the truck's cylinder, a ruler linked with a hydraulic cursor is used for an accurate depth adjustment.



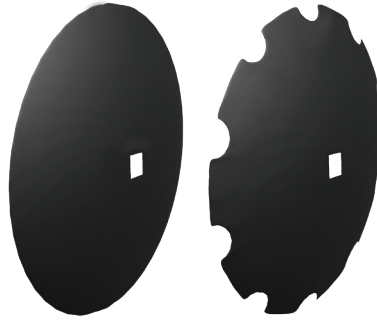
# DISCS

**Discs Ø660**



- Mounted on square shaft 40 mm
- Spacing between discs 230 mm
- Thickness available: 6, 7 and 8 mm

**Discs Ø730**



- Mounted on square shaft 50 mm
- Spacing between discs 270 mm
- Thickness available: 7 and 8 mm

**Discs Ø810**



- Mounted on square shaft 50 mm
- Spacing between discs 270 mm
- Thickness available: 10 mm

## SQUARE BEARING 40 mm

**Square bearing 40 mm**



- Cast iron lids and bearing housings
- Steel sheath
- Tapered roller bearings

**Square bearing 40 mm with standard protection**

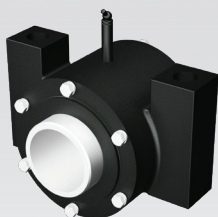


**Square bearing 40 mm with reinforced protection**



## SQUARE BEARING 50 mm

**Square bearing 50 mm**

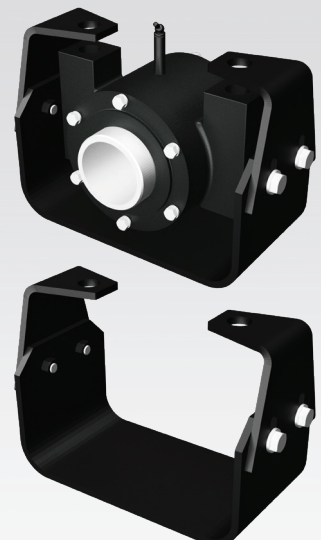


- Steel lids and bearing housings
- Steel sheath
- Tapered roller bearings

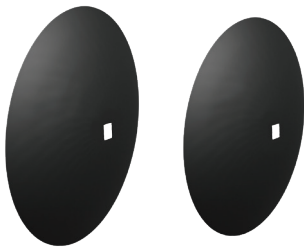
**Square bearing 50 mm with standard protection**



**Square bearing 50 mm with reinforced protection**



# ACCESSORIES



## + PLOUGHING DISC

To avoid any trace of the last disc after the roller passage and to get most perfect surface.



## + DEFLECTOR DISC

Fixed inside the first disc to avoid excessive earth projection outside the tool working width.



## + LATERAL DEFLECTOR

All directions adjustable, it prevents earth projection of the front array from getting out of the rear array working width.

## + BALANCE HYDRAULIC ADJUSTMENT

Useful for continuous adjustment while working on very rough ground.

# ARRAYS ANGLE ADJUSTMENT

## + MANUAL ADJUSTMENT WITH PUSHING ARM

As standard, this method ensure easy angle adjustment of the front array or the rear array.



## + HYDRAULIC ADJUSTMENT (OPTIONAL)

Independent for front array and rear array. Thanks to 2 DA cylinders, the arrays angle can be adjusted any time to suit heterogeneous plots.



from 2,35  
to 6,25 m



from 120  
to 320 CV

- CHASSIS steel beam 200 x 120 x 10 mm
- HITCH with rotating ring, height adjustment 3 positions, boom hydraulic offset by a DA cylinder, with optional lifting arm.
- BALANCE ADJUSTMENT with damper and parallel lifting device.
- ARRAYS 200 x 120 x 8 mm and 200 x 120 x 10 mm foldable Ø810 mm
- ANGLE ADJUSTMENT by ratchet pushing arm, 6 positions from 16 to 24°, locking by screw
- Manganese-silica SHAFT 40 mm, bearings with double row of tapered rollers, lubrication every 100 hours.

- WHEELS 500/50-17 FL+
- MECHANICAL COUPLING HYDRAULIC BRAKING standard
- TRUCK 2 DA cylinders with hydraulic slider (transport safety)
- VERTICAL FOLDING of the arrays by 4 DA cylinders CWHR
- SQUARE AXLE of 80 mm, 6 axes
- On CWHR track clutch (Ø660 mm)

Standard equipments



CWH 50 - 270 mm / 730-7 mm		20 discs		24 discs	
Working width		2,60 m		3,10 m	
Transport width		2,85 m		3,35 m	
Power		130 to 160 cv		160 to 200 cv	
Number of bearings		8		8	
Weight		3 940 kg		4 170 kg	

CWH FLAILS 50 - 270 mm / 810-10 mm		18 discs	20 discs	22 discs	24 discs
Working width	2,35 m	2,60 m	2,85 m	3,10 m	
Transport width	2,60 m	2,90 m	3,15 m	3,40 m	
Power	120 to 150 cv	130 to 160 cv	140 to 180 cv	160 to 200 cv	
Number of bearings	8	8	8	8	
Weight	4 025 kg	4 140 kg	4 255 kg	4 370 kg	

CWHR 40 - 230 mm / 660-6 mm		40 discs	44 discs	48 discs	52 discs	56 discs
Working width	4,45 m	4,90 m	5,35 m	5,80 m	6,25 m	
Transport width	3,00 m	3,00 m	3,00 m	3,00 m	3,00 m	
Power	160 to 200 cv	180 to 220 cv	200 to 240 cv	220 to 260 cv	250 to 300 cv	
Number of bearings	14	14	14	14	14	
Weight	4 550 kg	4 700 kg	4 850 kg	5 000 kg	5 450 kg	

CWHR 50 - 270 mm / 730-7 mm		32 discs	36 discs	40 discs	44 discs
Working width	4,15 m	4,65 m	5,20 m	5,70 m	
Transport width	3,00 m	3,00 m	3,00 m	3,00 m	
Power	220 to 260 cv	240 to 280 cv	260 to 300 cv	280 to 320 cv	
Number of bearings	14	14	14	14	
Weight	4 915 kg	5 145 kg	5 375 kg	5 605 kg	

CWHR FLAILS 50 - 270 mm / 810-10 mm		32 discs	36 discs		
Working width	4,15 m	4,65 m			
Transport width	3,00 m	3,00 m			
Power	220 to 260 cv	240 to 280 cv			
Number of bearings	14	14			
Weight	5 235 kg	5 505 kg			

### Options and accessories :

- Additional bearing
- Ploughing disc
- Deflector disc
- Side deflector
- Bearing protection shell
- Reinforced bearing protection shell
- Hydraulic balance adjustment
- Independant hydraulic adjustment for arrays
- Hitch on lifting arms
- Hydraulic suspension
- Hectare counter





### Devices **with INDEPENDENT DISCS**

SKYRON fixed independent disc harrow  
SKYRON folding independent disc harrow  
SKYRON self-supporting independent disc harrow



### Devices **with DISCS X**

ORBYS self-supporting X combining sprayer  
ZÉNITH RGH self-supporting X combining sprayer  
ZÉNITH RZH self-supporting X combining sprayer  
ZÉNITH RJH self-supporting X combining sprayer  
PHÉNIXTGX self-supporting X sprayer  
PHÉNIXTBX self-supporting X sprayer



### Devices **with DISCS V**

CWH - CWHR super heavy self-supporting V Cover Crop  
SYNCHRONIC CIN self-supporting V Cover Crop  
CLH - CVH heavy self-supporting V Cover Crop  
CIH - CJH self-supporting V Cover Crop



### Devices **with SUPPORTED DISCS**

VITICROP mounted X sprayer  
VINIDISC mounted disc harrow  
TXL mounted X sprayer  
TRW heavy-duty mounted reversible sprayer  
CCW - CCU mounted reversible sprayer



### Devices **for ROLLING**

ROLLPACK self-supporting cast iron roller  
TORO - RVH self-supporting cast iron roller  
RVH EVO self-supporting steel smooth roller



### Devices **with TINES**

KILIS - KILIS R combined cultivator with flexible tines  
TÉOS - TÉOS R stubble cultivator with curved tines 3 rows



### Devices **for LOOSENING**

ARASOL AVLE supported subsoiler  
ARASOL AVS - AVR supported subsoiler  
ARAPLOW ACV supported decompactor  
ARAPLOW ACM - ACMH supported decompactor  
ARAMULCH ADM - ADMH supported decompactor  
DVV supported subsoiler for vineyard and orchards



### Devices **for SPRING**

BLI - BMI - BSI folding and fixed mounted cultivator