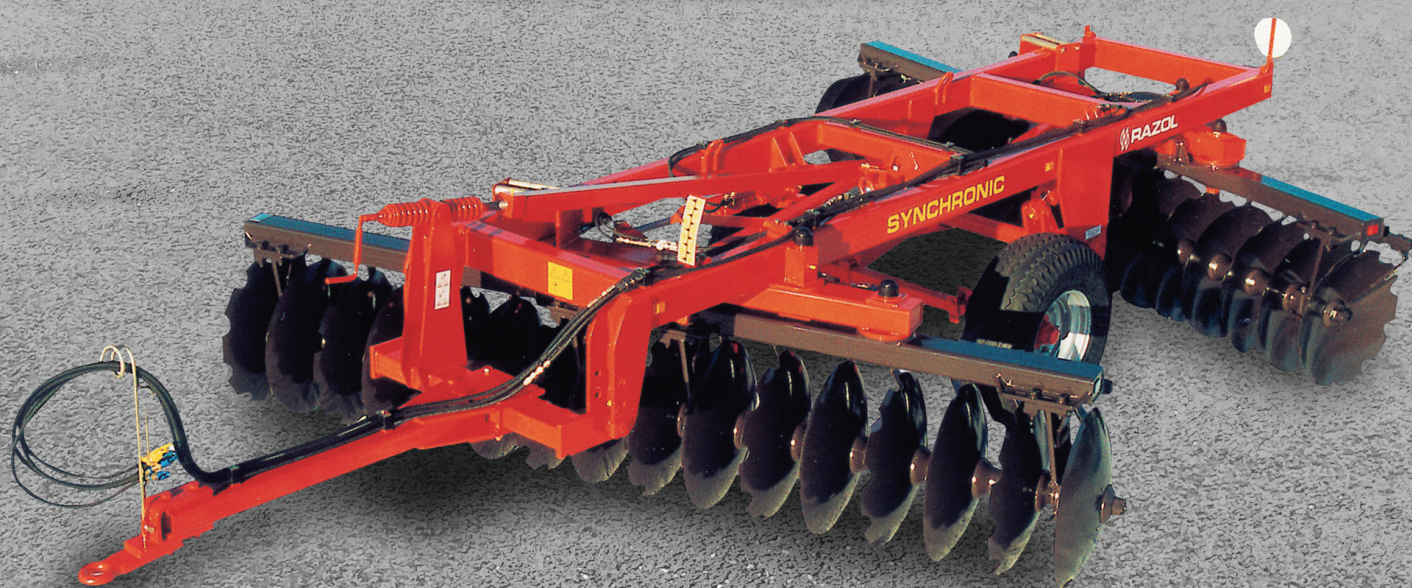


SYNCHRONIC CIN

Self-supporting V Cover Crop



www.razol.fr

SYNCHRONIC CIN

Self-supporting V Cover Crop



Strong points

Hydraulic adjustment of the angle of the discs

Longitudinal folding at 2,50 m on the road

Hitch fixed ring or rotating ring

Hydraulic connection : 2 DA outputs

Wheels lifting by 1 DA cylinder

+ MAIN CHASSIS

Double beam 180 x 100 x 8 mm for high sturdiness in difficult conditions.

+ INTERMEDIATE CHASSIS

150 x 100 x 10 mm for perfect rigidity of the assembly in deep and difficult work.

+ SAFETY

Homologated without braking for 40 km/h as standard.

+ PIVOTING

Disc-on-roll arrays for friction free adjustment and work positioning.

+ REMOVABLE HITCH

Mechanical or hydraulic adjustable of height 3 positions. Fixed ring or rotating ring. Parallel lifting device with load transfer on the hitch ring.

+ ARRAYS ANGLE ADJUSTMENT CONCEPT

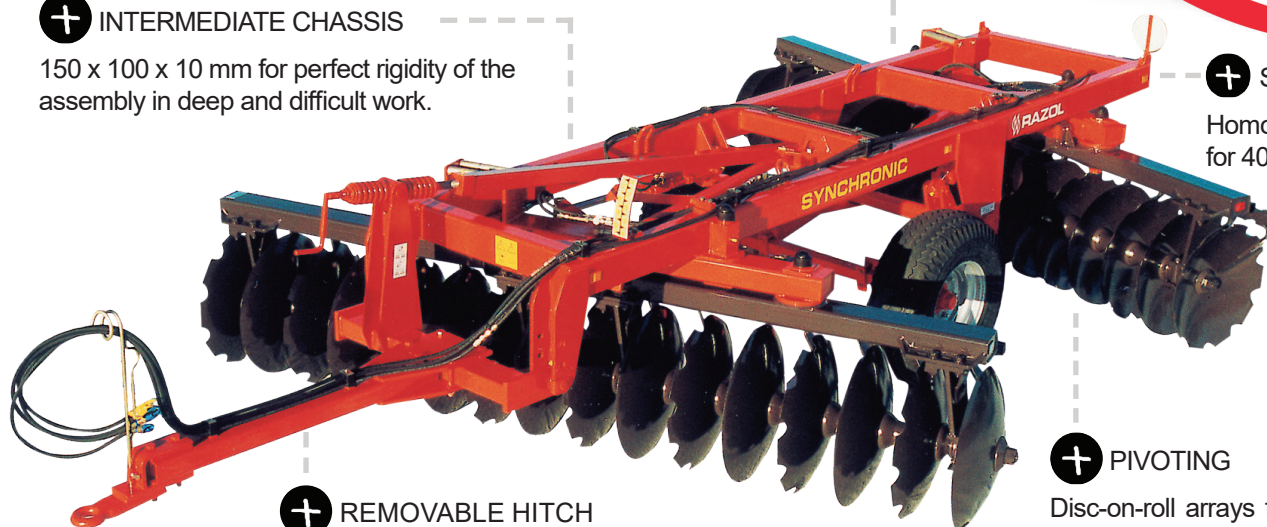
1 cylinder associated with connection rods ensures the synchronised adjustment of the front and rear arrays angle simultaneously. A graduated visual cue indicates the angle of the 2 arrays.

+ ARRAYS LOCKING

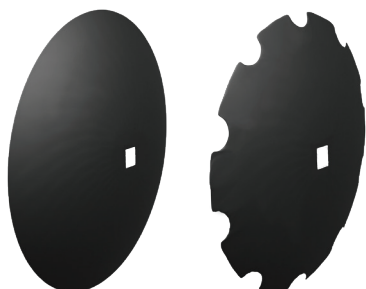
For good stability at work. Each discs array is held by a piton locked in the middle frame.

+ TRANSPORT WIDTH

At 2,50 m by 4 folding cylinders, high stability thanks to 300/80-15,3 FL+ wheels (optional 400/60-15,5 FL+ wheels), standard lighting for optimum safety on the road (hydraulic safety of the truck during transport)

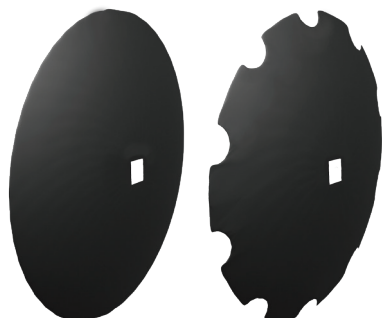


DISCS WITH INSIDE SHARPENING



+ DISCS Ø660

- Mounted on square shaft 40 mm
- Spacing between discs 230 mm
- Thickness available: 7 ou 8 mm

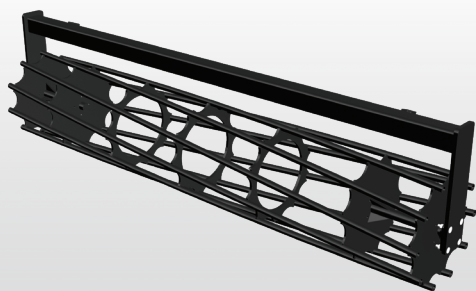


+ DISCS Ø710

- Mounted on square shaft 40 mm
- Spacing between discs 260 mm
- Thickness available: 7 ou 8 mm

ROLLER ROL 10

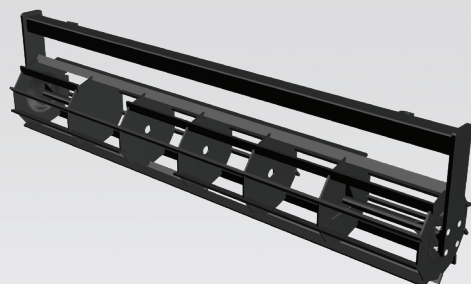
The SYNCHRONIC CIN can be equipped with a rear roller to crumble on the surface of the ground. The roller has hydraulic adjustment. However it also has a damping spring to deal with ground flatness defects



+ TUBES

Ø550 mm, 10 tubes
Flanged ball bearing Ø30 mm

- Dry and hilly lands
- Clays and sands
- Good tamping
- Weight : 130 kg/m



+ FLAT IRONS

Ø500 mm, 10 flats
Flanged ball bearing Ø30 mm

- Dry and hilly lands
- Clays and sands
- Aggressive flat irons
- Weight : 145 kg/m

If a rear roller is equipped, then braking is mandatory and the tool is homologated for 25 km/h.

ACCESSORIES



+ PLOUGHING DISC Ø510

To avoid any trace of the last disc after the roller passage and to get most perfect surface.

+ DEFLECTOR DISC Ø510

Fixed inside the first disc to avoid excessive earth projection outside the tool working width.

+ LATERAL DEFLECTOR

All directions adjustable, it prevents earth projection of the front array from getting out of the rear array working width.

+ BALANCE HYDRAULIC ADJUSTMENT

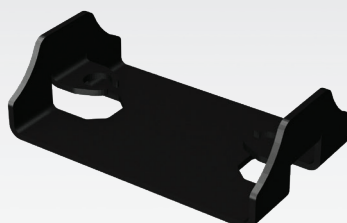
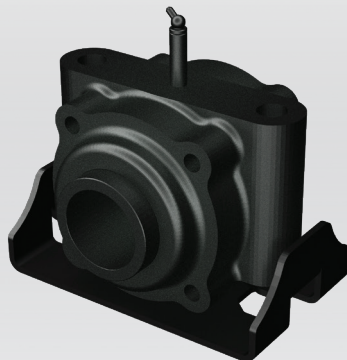
Useful for continuous adjustment while working on very rough ground.

BEARINGS

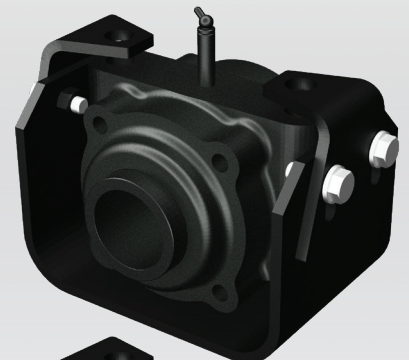
Square bearing 40 mm



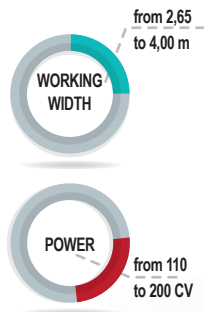
Square bearing 40 mm with standard protection



Square bearing 40 mm with reinforced protection



- Cast iron lids and bearing housings
- Steel sheath
- Tapered roller bearings



Standard equipments

- CHASSIS steel beam 180 x 100 x 8 mm, intermediate arrays holder beam 150 x 100 x 10 mm
- HITCH with fixed ring, adjustable in height 3 positions
- BALANCE ADJUSTMENT with damper
- PARALLEL LIFTING DEVICE
- ARRAYS 150 x 100 x 8 mm with angle hydraulic adjustment 9 positions from 8° to 24° by 1 DA cylinder
- Manganese-silica SHAFT 40 mm, bearings with double row of tapered rollers, lubrication every 100 hours
- WHEELS 300/80-15,5 FL+
- TRUCK 1 DA cylinder with hydraulic slider for depth control (transport safety)
- SQUARE AXLE of 60 mm, 6 axes
- LONGITUDINAL FOLDING for transport by the arrays adjustment DA cylinder
- WITHOUT BRAKING, standard secondary attachment chain

CIN 230 mm/660-6 mm	24 discs	26 discs	28 discs	32 discs	36 discs
Working width	2,65 m	2,90 m	3,10 m	3,55 m	4,00 m
Power	110 to 140 cv	120 to 150 cv	130 to 160 cv	140 to 180 cv	160 to 200 cv
Number of bearings	8	8	8	8	8
Weight	2 960 kg	3 120 kg	3 280 kg	3 440 kg	3 600 kg

CIN 260 mm/660-6 mm	24 discs	26 discs	28 discs	32 discs
Working width	2,95 m	3,20 m	3,50 m	4,00 m
Power	120 to 150 cv	130 to 160 cv	140 to 180 cv	160 to 200 cv
Number of bearings	8	8	8	8
Weight	2 980 kg	3 150 kg	3 320 kg	3 490 kg

Options available:

- Additional bearing
- Wheels 400/60-R15,5 FL+
- Hydraulic offset
- Hydraulic suspension

ROL 10

- CHASSIS steel beam 120 x 120 x 7 mm
- 2 ELEMENTS with hydraulic lifting
- HYDRAULIC FOLDING of the elements by 2 DA cylinders
- SOIL ADJUSTMENT by 1 DA cylinder equipped with a hydraulic valve
- DAMPER with adjustable tension spring
- HYDRAULIC CONNECTION 1 DA output

Braking mandatory with a roller

ROL 10 FLAT IRONS	Working width	3,35 m	3,80 m	4,25 m	4,75 m
Ø500 mm, 10 flats	Weight	700 kg	725 kg	755 kg	780 kg
ROL 10 TUBES	Working width	3,35 m	4,65 m	5,10 m	5,60 m
Ø550 mm, 10 tubes	Weight	690 kg	715 kg	740 kg	765 kg



Devices **with INDEPENDENT DISCS**

SKYRON fixed independent disc harrow
SKYRON folding independent disc harrow
SKYRON self-supporting independent disc harrow



Devices **with DISCS X**

ORBYS self-supporting X combining sprayer
ZÉNITH RGH self-supporting X combining sprayer
ZÉNITH RZH self-supporting X combining sprayer
ZÉNITH RJH self-supporting X combining sprayer
PHÉNIXTGX self-supporting X sprayer
PHÉNIXTBX self-supporting X sprayer



Devices **with DISCS V**

CWH - CWHR super heavy self-supporting V Cover Crop
SYNCHRONIC CIN self-supporting V Cover Crop
CLH - CVH heavy self-supporting V Cover Crop
CIH - CJH self-supporting V Cover Crop



Devices **with SUPPORTED DISCS**

VITICROP mounted X sprayer
VINIDISC mounted disc harrow
TXL mounted X sprayer
TRW heavy-duty mounted reversible sprayer
CCW - CCU mounted reversible sprayer



Devices **for ROLLING**

ROLLPACK self-supporting cast iron roller
TORO - RVH self-supporting cast iron roller
RVH EVO self-supporting steel smooth roller



Devices **with TINES**

KILIS - KILIS R combined cultivator with flexible tines
TÉOS - TÉOS R stubble cultivator with curved tines 3 rows



Devices **for LOOSENING**

ARASOL AVLE supported subsoiler
ARASOL AVS - AVR supported subsoiler
ARAPLOW ACV supported decompactor
ARAPLOW ACM - ACMH supported decompactor
ARAMULCH ADM - ADMH supported decompactor
DVV supported subsoiler for vineyard and orchards



Devices **for SPRING**

BLI - BMI - BSI folding and fixed mounted cultivator