

# CIH - CJH / CLH - CVH

(heavy) self-supporting V Cover Crop

Société Nouvelle  
**RAZOL**



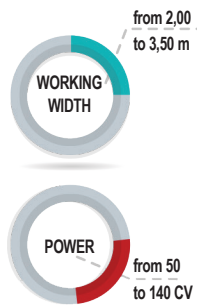
[www.razol.fr](http://www.razol.fr)



# CIH - CJH

Self-supporting V Cover Crop

Strong points



## Standard equipments



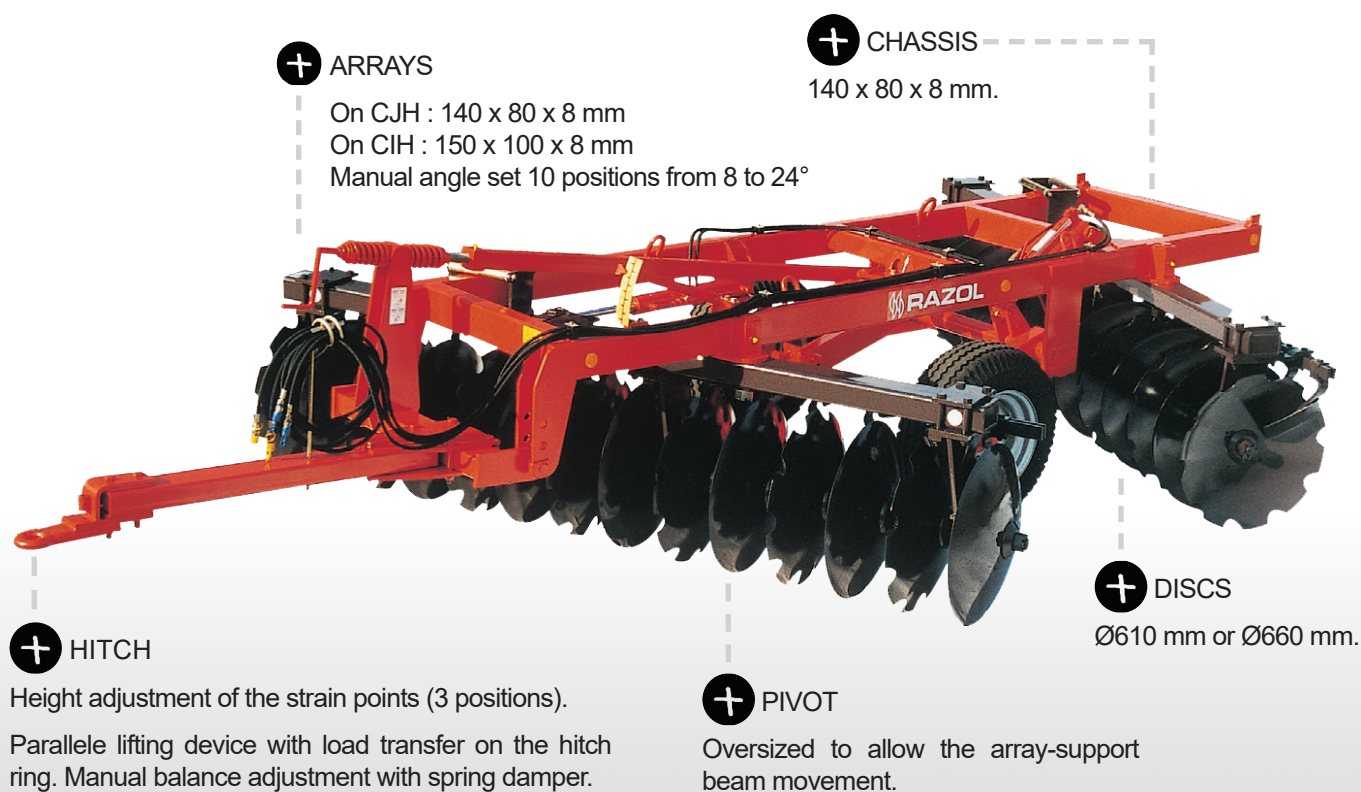
- CHASSIS steel beam 140 x 80 x 8 mm
- HITCH with fixed ring, height adjustment 3 positions
- BALANCE ADJUSTMENT with damper and parallel lifting device
- CJH ARRAYS 140 x 80 x 8 mm / CIH ARRAYS 150 x 100 x 8 mm
- MANUAL ANGLE SET 10 positions from 8° to 24°
- Manganese-silica SHAFT 40 mm, bearings with double row of tapered rollers, lubrication every 100 hours
- TRUCK 1 DA cylinder with hydraulic slider for depth control (transport safety)
- TRANSPORT WIDTH : working width + 25 cm
- WITHOUT BRAKING, standard secondary attachment chain
- SIGNALLING standard
- WHEELS CJH 10.0/80-12 / CIH 260/70-15,3 FL+
- SQUARE AXLE CJH 50 mm, 5 axes / CIH 60 mm, 6 axes

Fixed ring or rotating ring

Manual adjustment of the angle of the discs (optional hydraulic)

Hydraulic connection : 1 DA outlet

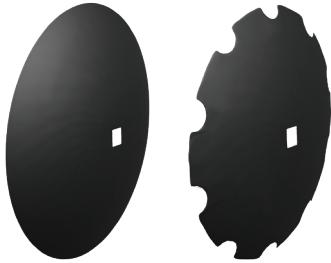
CIH and CJH have been specifically designed for medium power tractors in order to do ploughing, stubble cultivation, soil preparation before sowing and orchard maintenance.



| CJH 230 mm/610-5 mm | 18 discs    | 20 discs    | 22 discs    | 24 discs     |              |               |               |
|---------------------|-------------|-------------|-------------|--------------|--------------|---------------|---------------|
| Working width       | 2,00 m      | 2,20 m      | 2,45 m      | 2,65 m       |              |               |               |
| Power               | 50 to 70 cv | 60 to 80 cv | 70 to 90 cv | 80 to 110 cv |              |               |               |
| Number of bearings  | 4           | 4           | 6           | 6            |              |               |               |
| Weight              | 1 660 kg    | 1 720 kg    | 1 840 kg    | 1 900 kg     |              |               |               |
| CJH 230 mm/660-6 mm | 18 discs    | 20 discs    | 22 discs    | 24 discs     |              |               |               |
| Working width       | 2,00 m      | 2,20 m      | 2,45 m      | 2,65 m       |              |               |               |
| Power               | 50 to 70 cv | 60 to 80 cv | 70 to 90 cv | 80 to 110 cv |              |               |               |
| Number of bearings  | 4           | 4           | 6           | 6            |              |               |               |
| Weight              | 1 765 kg    | 1 835 kg    | 1 965 kg    | 2 035 kg     |              |               |               |
| CIH 230 mm/660-6 mm |             | 20 discs    | 22 discs    | 24 discs     | 26 discs     | 28 discs      | 32 discs      |
| Working width       |             | 2,20 m      | 2,45 m      | 2,65 m       | 2,90 m       | 3,10 m        | 3,50 m        |
| Power               |             | 60 to 80 cv | 70 to 90 cv | 80 to 110 cv | 90 to 120 cv | 100 to 130 cv | 110 to 140 cv |
| Number of bearings  |             | 6           | 6           | 6            | 8            | 8             | 8             |
| Weight              |             | 1 965 kg    | 2 035 kg    | 2 105 kg     | 2 265 kg     | 2 335 kg      | 2 520 kg      |

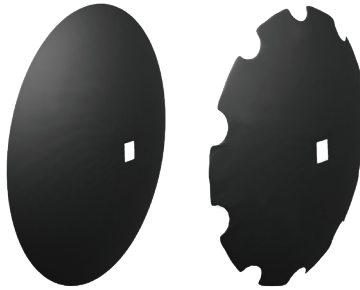
# DISCS

**Discs Ø610**



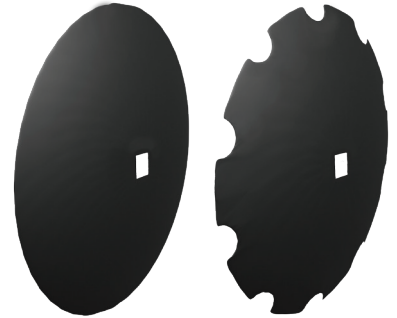
- Mounted on square shaft 40 mm
- Spacing between discs 230 mm
- Thickness available: 5 and 6 mm

**Discs Ø660**



- Mounted on square shaft 40 mm
- Spacing between discs 230 mm
- Thickness available: 6, 7 and 8 mm

**Discs Ø710**



- Mounted on square shaft 40 mm
- Spacing between discs 260 mm
- Thickness available: 7 and 8 mm

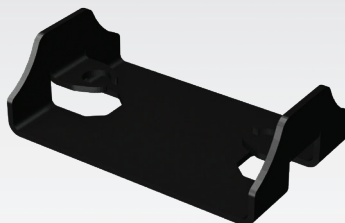
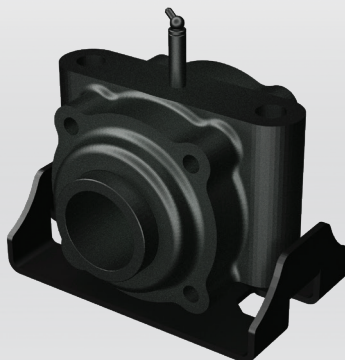
# BEARINGS

**Square bearing 40 mm**

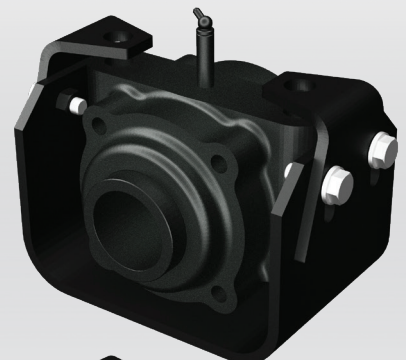


- Cast iron lids and bearing housings
- Steel sheath
- Tapered roller bearings

**Square bearing 40 mm  
with standard protection**



**Square bearing 40 mm  
with reinforced protection**



# ACCESSORIES



## + PLOUGHING DISC

To avoid any trace of the last disc after the roller passage and to get most perfect surface.

## + DEFLECTOR DISC

Fixed inside the first disc to avoid excessive earth projection outside the tool working width.

## + LATERAL DEFLECTOR

All directions adjustable, it prevents earth projection of the front array from getting out of the rear array working width.

## + BALANCE HYDRAULIC ADJUSTMENT

Useful for continuous adjustment while working on very rough ground.

# ARRAYS ANGLE ADJUSTMENT

## + MANUAL ADJUSTMENT

And manual lock safely reachable from the outside of the tool. An even more efficient locking system can be used as a option.



## + HYDRAULIC ADJUSTMENT (OPTIONAL)

A cylinder allows synchronized adjustment of the 2 discs arrays' opening angle.

The array adjustment arm allows you to change the rear array's opening angle depending on the front array's angle.

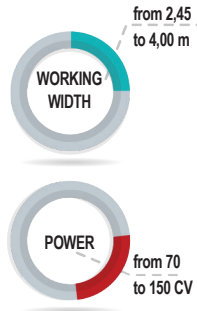
A ruler indicates the angle of the 2 arrays.



# CLH - CVH

Heavy self-supporting V Cover Crop

Strong points



## Standard equipments



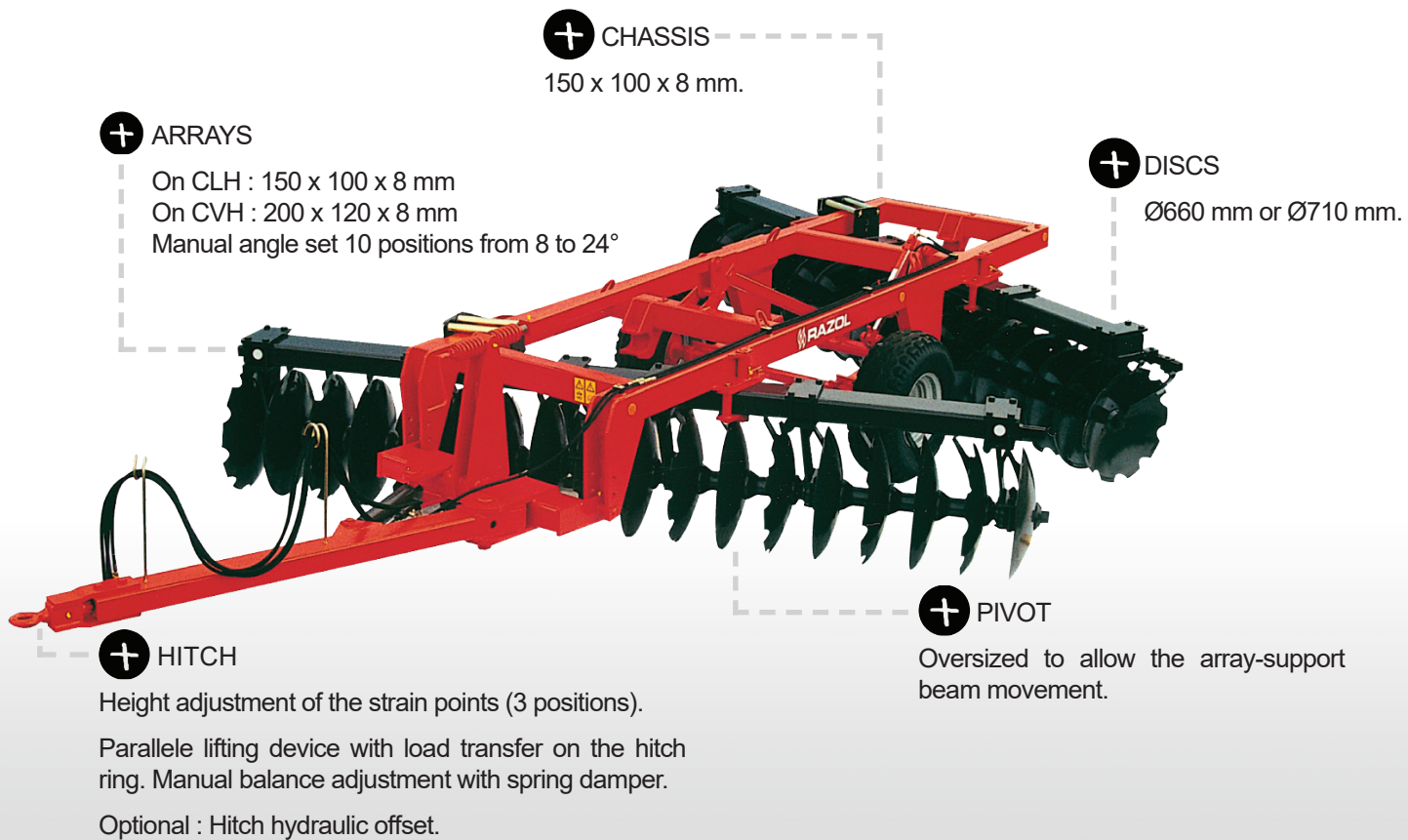
- CHASSIS steel beam 150 x 100 x 8 mm
- HITCH with fixed ring, height adjustment 3 positions
- BALANCE ADJUSTMENT with damper and parallel lifting device
- CLH ARRAYS 150 x 100 x 8 mm / CVH ARRAYS 200 x 120 x 8 mm
- MANUAL ANGLE SET 10 positions from 8° to 24°
- Manganese-silica SHAFT 40 mm, bearings with double row of tapered rollers, lubrication every 100 hours
- TRUCK 1 DA cylinder with hydraulic slider for depth control (transport safety)
- TRANSPORT WIDTH : working width + 25 cm
- WITHOUT BRAKING, standard secondary attachment chain
- WHEELS 300/80-15,3 FL+
- SQUARE AXLE 60 mm, 6 axes
- LIGHTING and SIGNALLING standard

Fixed ring or rotating ring

Manual adjustment of the angle of the discs (optional hydraulic)

Hydraulic connection : 1 DA outlet

CLH and CVH have been designed for medium and large scale exploitation. With a more robust design, these tools are perfect for heavy stubble cultivating or for crop residue burying.



| CLH 230 mm/660-6 mm | 22 discs     | 24 discs     | 26 discs      | 28 discs      | 32 discs      | 36 discs      |
|---------------------|--------------|--------------|---------------|---------------|---------------|---------------|
| Working width       | 2,45 m       | 2,65 m       | 2,90 m        | 3,10 m        | 3,55 m        | 4,00 m        |
| Power               | 70 to 90 cv  | 80 to 110 cv | 90 to 120 cv  | 100 to 130 cv | 110 to 140 cv | 120 to 150 cv |
| Number of bearings  | 6            | 6            | 6             | 8             | 8             | 8             |
| Weight              | 2 420 kg     | 2 500 kg     | 2 580 kg      | 2 740 kg      | 2 900 kg      | 3 060 kg      |
| CVH 230 mm/660-6 mm | 22 discs     | 24 discs     | 26 discs      | 28 discs      | 32 discs      | 36 discs      |
| Working width       | 2,45 m       | 2,65 m       | 2,90 m        | 3,10 m        | 3,55 m        | 4,00 m        |
| Power               | 70 to 90 cv  | 80 to 110 cv | 90 to 120 cv  | 100 to 130 cv | 110 to 140 cv | 120 to 150 cv |
| Number of bearings  | 6            | 8            | 8             | 8             | 8             | 8             |
| Weight              | 2 515 kg     | 2 675 kg     | 2 755 kg      | 2 835 kg      | 2 995 kg      | 3 155 kg      |
| CVH 260 mm/660-6 mm | 22 discs     | 24 discs     | 26 discs      | 28 discs      | 32 discs      |               |
| Working width       | 2,70 m       | 2,95 m       | 3,20 m        | 3,50 m        | 4,00 m        |               |
| Power               | 80 to 110 cv | 90 to 120 cv | 100 to 130 cv | 110 to 140 cv | 120 to 150 cv |               |
| Number of bearings  | 6            | 8            | 8             | 8             | 8             |               |
| Weight              | 2 590 kg     | 2 755 kg     | 2 840 kg      | 2 930 kg      | 3 100 kg      |               |



### Devices **with INDEPENDENT DISCS**

SKYRON fixed independent disc harrow  
SKYRON folding independent disc harrow  
SKYRON self-supporting independent disc harrow



### Devices **with DISCS X**

ORBYS self-supporting X combining sprayer  
ZÉNITH RGH self-supporting X combining sprayer  
ZÉNITH RZH self-supporting X combining sprayer  
ZÉNITH RJH self-supporting X combining sprayer  
PHÉNIXTGX self-supporting X sprayer  
PHÉNIXTBX self-supporting X sprayer



### Devices **with DISCS V**

CWH - CWHR super heavy self-supporting V Cover Crop  
SYNCHRONIC CIN self-supporting V Cover Crop  
CLH - CVH heavy self-supporting V Cover Crop  
CIH - CJH self-supporting V Cover Crop



### Devices **with SUPPORTED DISCS**

VITICROP mounted X sprayer  
VINIDISC mounted disc harrow  
TXL mounted X sprayer  
TRW heavy-duty mounted reversible sprayer  
CCW - CCU mounted reversible sprayer



### Devices **for ROLLING**

ROLLPACK self-supporting cast iron roller  
TORO - RVH self-supporting cast iron roller  
RVH EVO self-supporting steel smooth roller



### Devices **with TINES**

KILIS - KILIS R combined cultivator with flexible tines  
TÉOS - TÉOS R stubble cultivator with curved tines 3 rows



### Devices **for LOOSENING**

ARASOL AVLE supported subsoiler  
ARASOL AVS - AVR supported subsoiler  
ARAPLOW ACV supported decompactor  
ARAPLOW ACM - ACMH supported decompactor  
ARAMULCH ADM - ADMH supported decompactor  
DVV supported subsoiler for vineyard and orchards



### Devices **for SPRING**

BLI - BMI - BSI folding and fixed mounted cultivator